



Rotating Pop-Up Foam Extinguishing Nozzle
for Helidecks

*Cool down.
Fire Protection by*

MINIMAX

SAFETY

360°

The Risk

At sea, safety requirements for ships and off-shore facilities such as oil platforms are of the utmost importance. This also applies to fire protection measures. After all, in the event of fire, rapid escape is usually impossible and the prompt arrival of help from outside cannot be expected.

In light of the various types of fire risks, which exist on board ships, specific solutions are

necessary for the space or object to be protected in order to ensure optimal fire protection on board.

A helicopter accident, resulting in fuel spillage with wreckage and/or fire and smoke, may render some of the equipment unusable or preclude the use of some passenger escape routes.

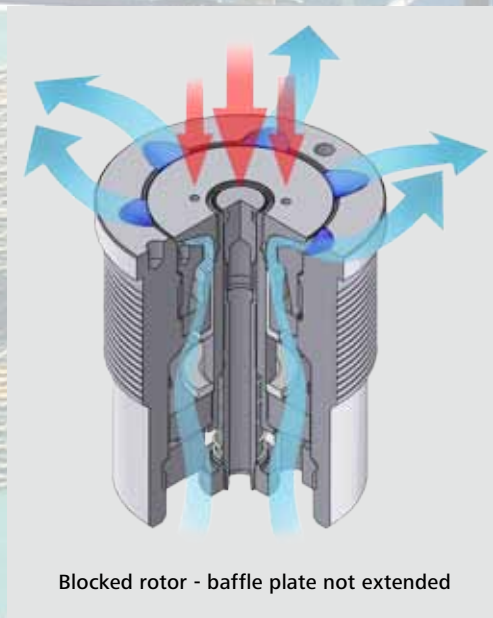
The solution

The new rotating foam extinguishing nozzle has been designed and developed to meet exacting fire protection requirements for landing decks. The industry's trend towards ships with smaller crews and unmanned platforms makes this equipment essential for maintaining the safety of these critical areas.

The nozzle is fully recessed in the deck. So it represents neither a visual obstruction nor a potential tripping hazard.

In the event of activation, liquid pressure raises a baffle and the deck is coated with a carpet of foam. The rotational action of the nozzles enables three spray jets to be propelled up to a height of five meters increasing the overall coverage and producing a carpet of protective foam over the deck area and any large pieces of equipment.

In the case of a blocked baffle plate the water can pass through openings to the surface. The extinguishing function is preserved.



ON HELIDECKS

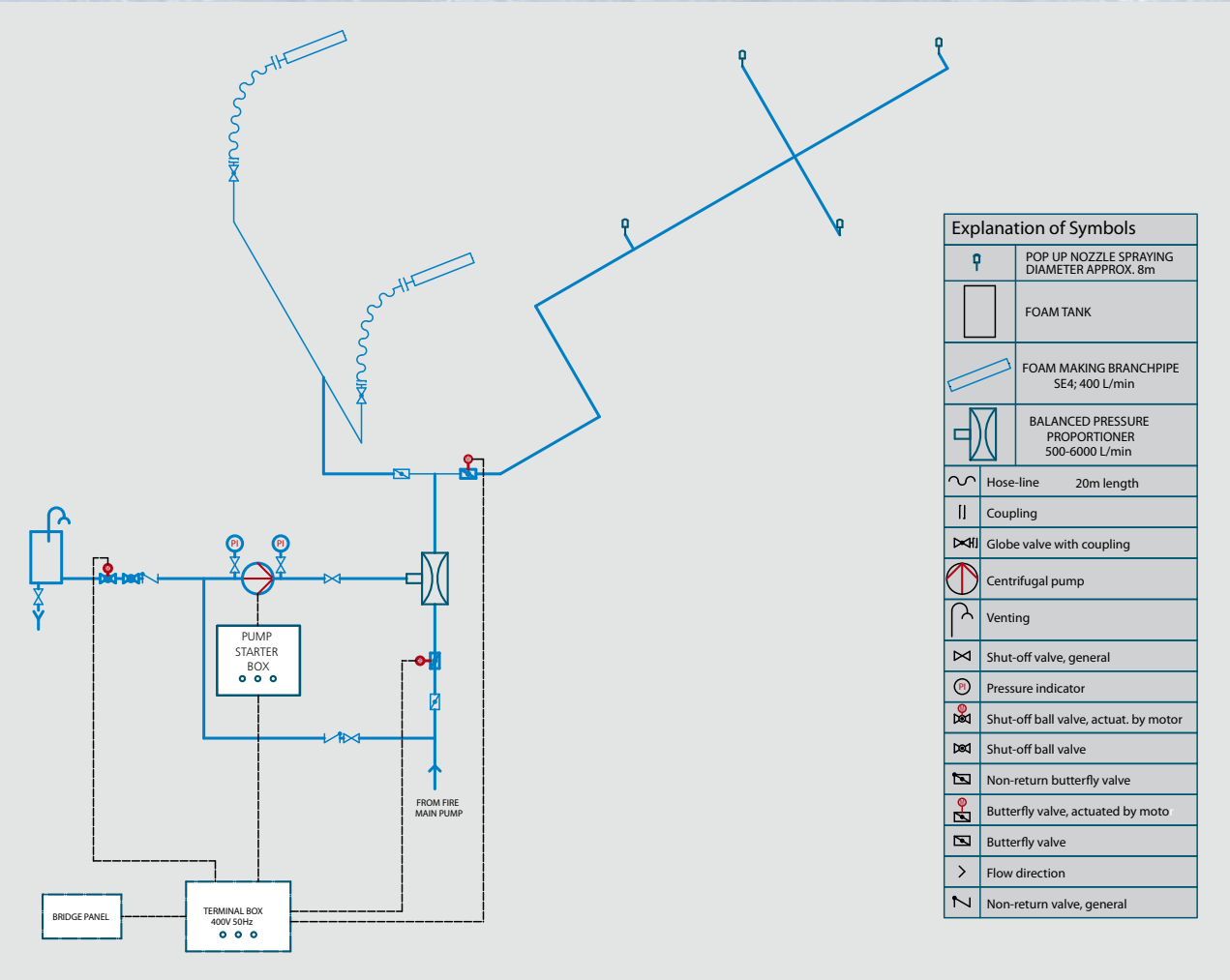
rotating pop-up foam extinguishing nozzle

How the system works

The system is started manually. The pop-up nozzles are propelled upward by the water pressure and opened. A foam inductor mixes the water with the corresponding volume of foaming agent, which is stored in a foaming agent tank.

An optional electrical trigger is available.

Scheme of operation



BENEFITS

- ▶ Foam is sprayed instantaneously onto the landing surface and any objects placed on it
- ▶ Nozzle assembly completely recessed and flush with the deck when not in use
- ▶ Nozzle rotational drive give high throw for greater coverage
- ▶ Quick and cost-effective installed from the top of the deck
- ▶ Foam spraying density exceeds CAP 437 (6l/min/m²)



Technical Details:

- Flow Rate, water V_w : 367l/min at 4bar
- Spray coverage: up to 9m diameter
- Spray height: up to 5m
- Recommended operating pressure: 4-8bar

Minimax GmbH & Co. KG
Division Marine
Industriestrasse 10/12
D-23840 Bad Oldesloe
Phone: +49 45 31 8 03-0
Fax: +49 45 31 8 03-248
E-Mail: marine-division@minimax.de
www.minimax.de



Right reserved to make technical changes.